

NARDI **COMPRESSORI** **HIGH PRESSURE**

Quality System Certified

ISO 9001:2015



*High
-
Pressure
ACCESSORIES*

The filtering systems and cartridges manufactured by NARDI COMPRESSORI have been designed and produced to optimize their efficiency and for maximum safety during their use.

The duty of the NARDI COMPRESSORI extensive filter and cartridge range is to purify air and any compressed gases, to remove water and oil remains and any odors that might pass through mechanical separators. These filters are equipped with an extra mechanical separator which spin-dries air and eliminates liquids prior to entry in the filter intake.

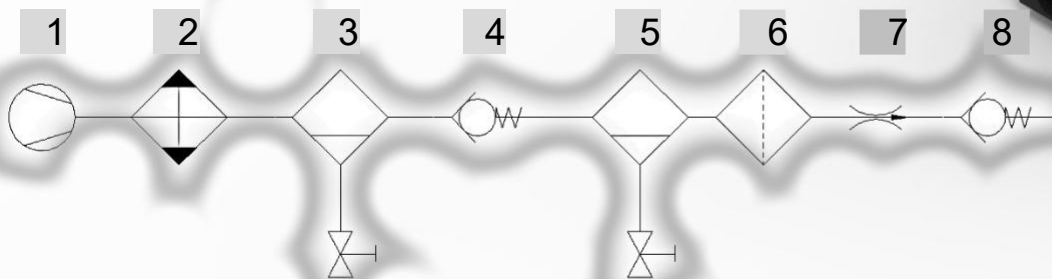
All filters have a maintenance valve to ensure maximum contact of gases with the absorbing materials, this procedure guarantees conformity with breathing air restrictions DIN EN 12021:2014.

The cartridge body is completely built in aluminum, it contains two felt disks to remove larger particles, a molecular sieve to discharge water vapor, activated carbon to eliminate oil vapors and odors and hopcalite (optional) to convert CO to CO₂.

All cartridges go through a decontamination process, they are sealed and vacuum-packed to ensure integrity of the drying material from any external agents over the time.

Utilizing original NARDI COMPRESSORI accessories is a must!

1. Compressor
2. After cooler
3. Separator
4. Check valve
5. Separator in filter
6. Filter cartridge
7. Pressure maintaining valve
8. Check valve



FUNCTIONS OF THE NARDI FILTERING-SYSTEM

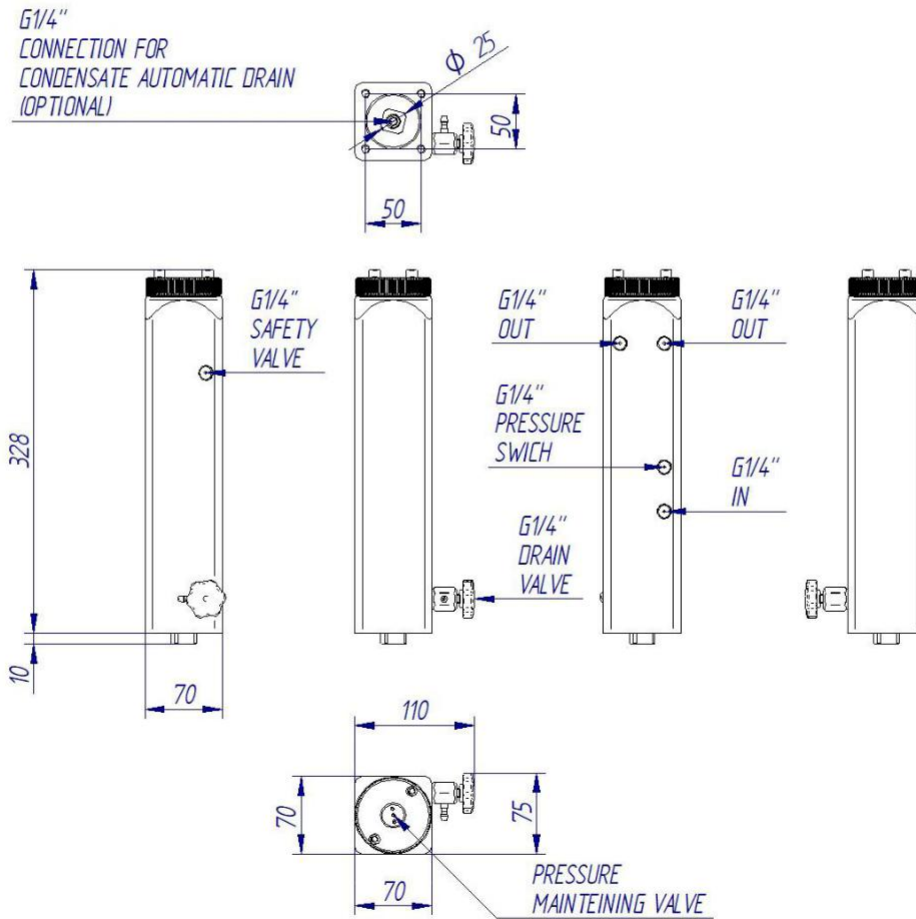
The filtering system is used to purify gases and compressed air in high pressure from any contaminants such as water, oil, odors and other particles.

The NARDI filtering-system guarantees limit values within EN 12021 and EN 8573-1 standards for breathing air and other gases for industrial and professional use.



MODEL	PRESSURE RANGE	FREE AIR CAPACITY
ATL	90/350 BAR – 1300/ 5000 psi	160 l/min – 9,6 m ³ /h – 6 cfm
PAC1	90/450 BAR – 1300/ 6500 psi	350 l/min – 21 m ³ /h – 12 cfm
PAC2	90/450 BAR – 1300/ 6500 psi	450 l/min – 27 m ³ /h – 16 cfm
PAC3	90/450 BAR – 1300/ 6500 psi	600 l/min – 36 m ³ /h – 21 cfm
PAC3 + PAC3	90/450 BAR – 1300/ 6500 psi	1000 l/min – 60 m ³ /h – 35 cfm

ATL FILTERING-SYSTEM



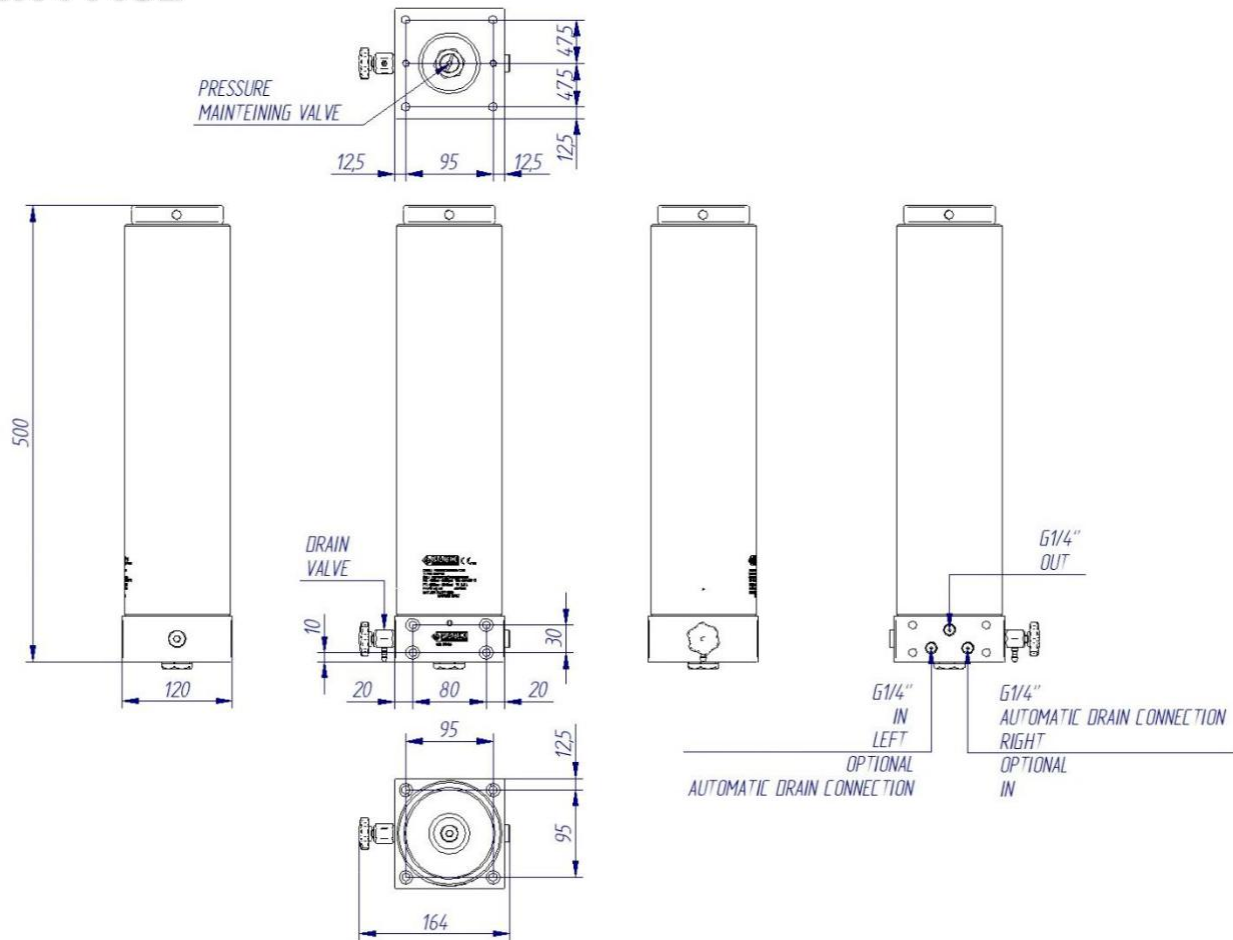
FILTER	DESCRIPTION	CODE
ATL	Filter tower ATL without cartridge for manual condensate drain	AT148-105
ATL	Filter tower ATL without cartridge for automatic condensate drain	AT148-106

CARTRIDGE	DESCRIPTION	CODE
ATL ELET	Cartridge for ATLANTIC electric with MC-AC	AT149-101
ATL GASOL	Cartridge for ATLANTIC gasoline with MC-AC-HO	AT149-102

Proprietà di NARDI® COMPRESSORI

MC molecular sieve - AC activated carbon - HO hopcalite (CO converter)

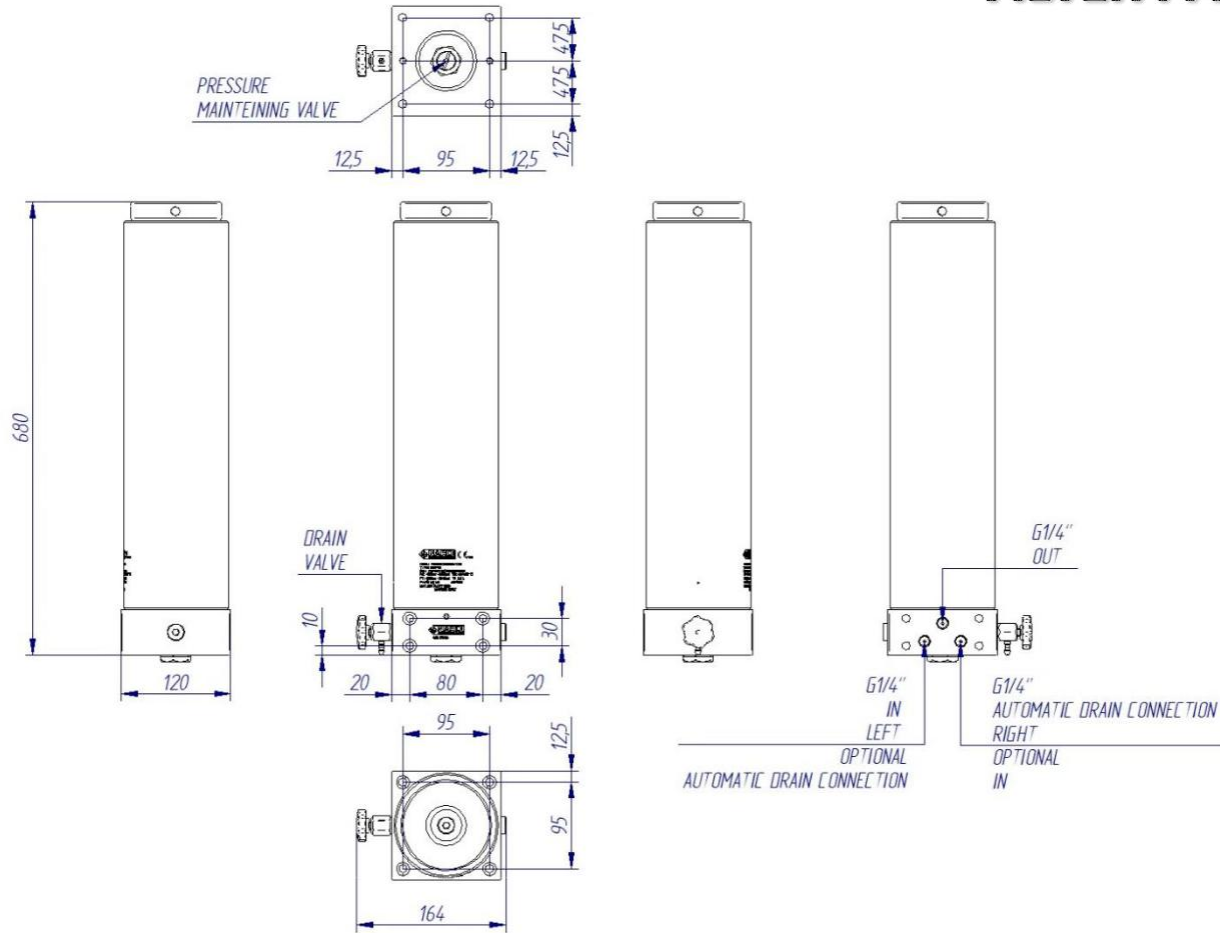
FILTER PAC1



FILTER	DESCRIPTION	CODE
PAC1	Filter Tower PAC1 without cartridge with INLET on the LEFT and with maintaining pressure valve, PED CERTIFIED	PA100-181
PAC1	Filter Tower PAC1 without cartridge with INLET on the RIGHT and with maintaining pressure valve, PED CERTIFIED	PA100-182
PAC1	Filter Tower PAC1 without cartridge with INLET on the LEFT and without maintaining pressure valve, PED CERTIFIED	PA100-183
PAC1	Filter Tower PAC1 without cartridge with INLET on the RIGHT and without maintaining pressure valve, PED CERTIFIED	PA100-184

CARTRIDGE	DESCRIPTION	CODE
PAC1 ELET	Cartridge for PAC1 electric with MC-AC	PA100-101
PAC1 GASOL	Cartridge for PAC1 gasoline with MC-AC-HO	PA100-102
PAC1 IND	Cartridge for PAC1 industrial with MC-AC	PA100-103

FILTER PAC2



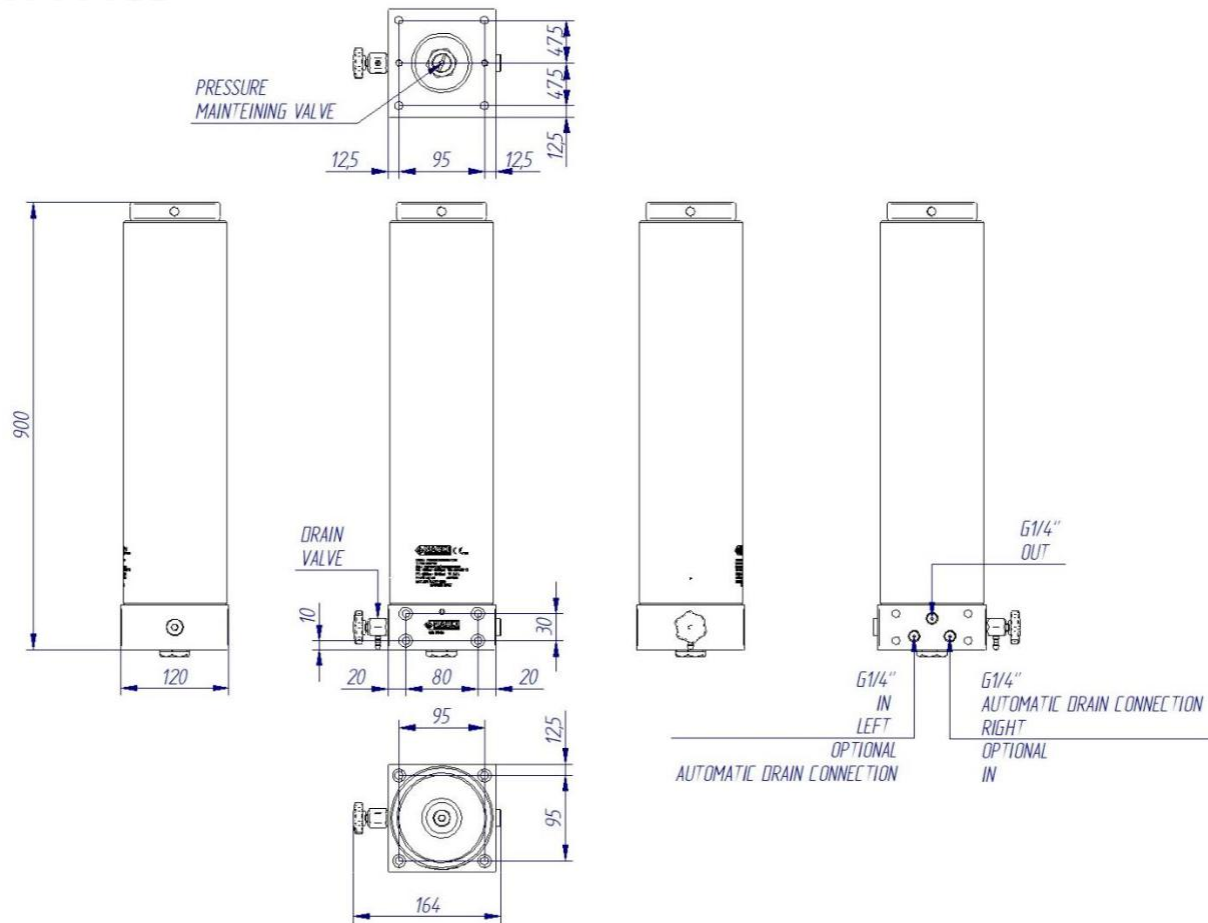
FILTER	DESCRIPTION	CODE
PAC2	Filter Tower PAC2 without cartridge with INLET on the LEFT and with maintaining pressure valve, PED CERTIFIED	PA100-281
PAC2	Filter Tower PAC2 without cartridge with INLET on the RIGHT and with maintaining pressure valve, PED CERTIFIED	PA100-282
PAC2	Filter Tower PAC2 without cartridge with INLET on the LEFT and without maintaining pressure valve, PED CERTIFIED	PA100-283
PAC2	Filter Tower PAC2 without cartridge with INLET on the RIGHT and without maintaining pressure valve, PED CERTIFIED	PA100-284

CARTRIDGE	DESCRIPTION	CODE
PAC2 ELET	Cartridge for PAC2 electric with MC-AC	PA100-201
PAC2 GASOL	Cartridge for PAC2 gasoline with MC-AC-HO	PA100-202
PAC2 IND	Cartridge for PAC2 industrial with MC-AC	PA100-205

Proprietà di NARDI® COMPRESSORI

MC molecular sieve - AC activated carbon - HO hopcalite (CO converter)

FILTER PAC3



FILTER	DESCRIPTION	CODE
PAC3	Filter Tower PAC3 without cartridge with INLET on the LEFT and with maintaining pressure valve, PED CERTIFIED	PA100-381
PAC3	Filter Tower PAC3 without cartridge with INLET on the RIGHT and with maintaining pressure valve, PED CERTIFIED	PA100-382
PAC3	Filter Tower PAC3 without cartridge with INLET on the LEFT and without maintaining pressure valve, PED CERTIFIED	PA100-383
PAC3	Filter Tower PAC3 without cartridge with INLET on the RIGHT and without maintaining pressure valve, PED CERTIFIED	PA100-384
CARTRIDGE	DESCRIPTION	CODE
PAC3 ELET	Cartridge for PAC3 electric with MC-AC	PA100-301
PAC3 GASOL	Cartridge for PAC3 gasoline with MC-AC-HO	PA100-302
PAC3 IND	Cartridge for PAC3 industrial with MC-AC	PA100-305

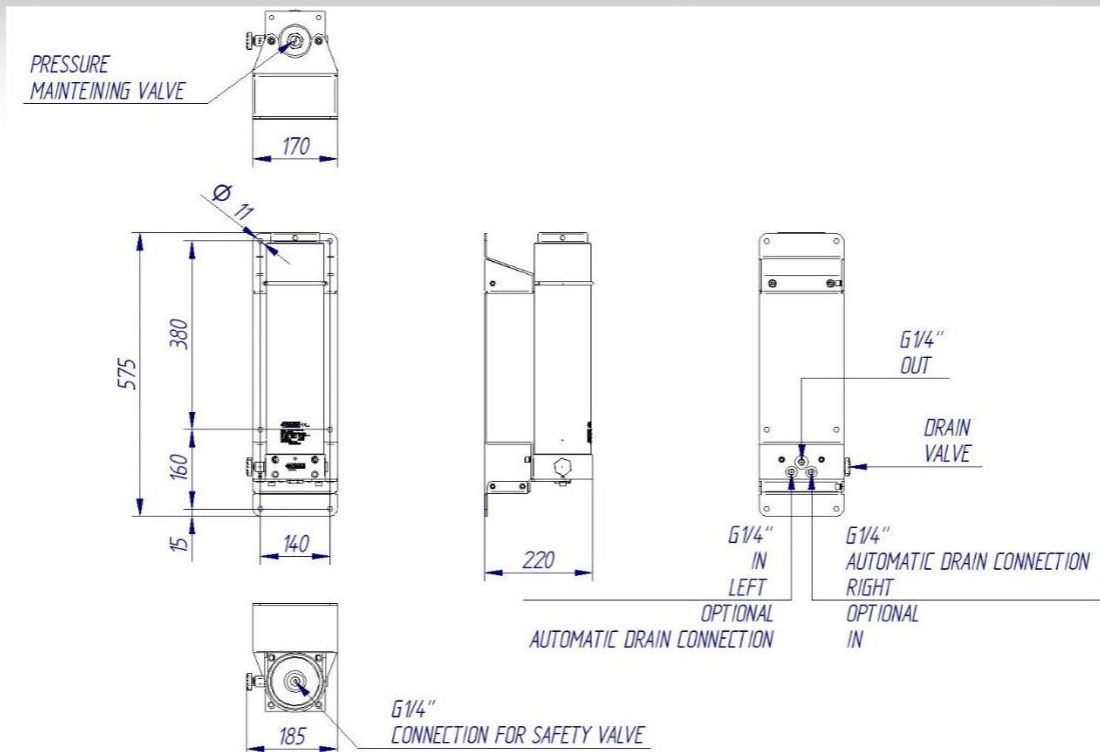
MC molecular sieve - AC activated carbon - HO hopcalite (CO converter)

MADE IN ITALY BY NARDI COMPRESSORI

PAC FILTER WALL MOUNTING SYSTEM



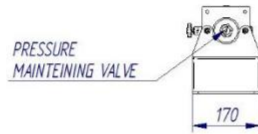
WALL MOUNTING PAC1



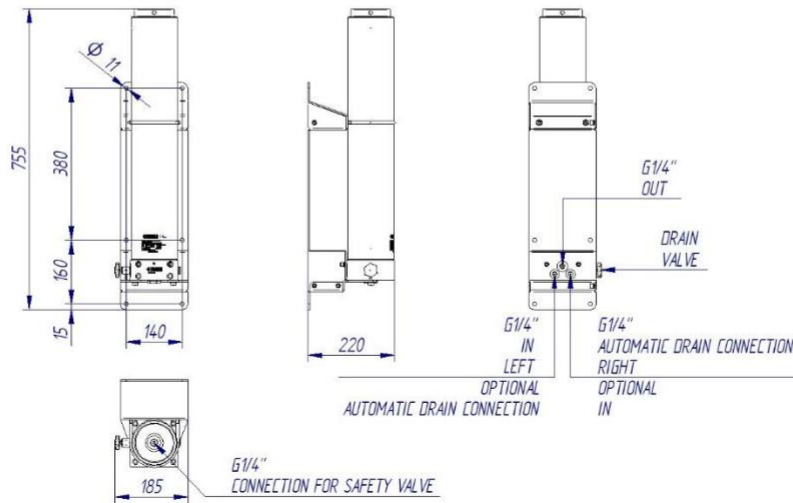
FILTER	DESCRIPTION	CODE
PAC1	Filter Tower PAC1 with wall mounting system without cartridge with INLET on the LEFT, with maintaining pressure valve, PED CERTIFIED	PA100-191
PAC1	Filter Tower PAC1 with wall mounting system without cartridge with INLET on the RIGHT, with maintaining pressure valve, PED CERTIFIED	PA100-192

SUPPLIED WITHOUT SAFETY VALVE
MADE IN ITALY BY NARDI COMPRESSORI

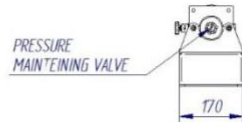
PURIFICATION SYSTEM



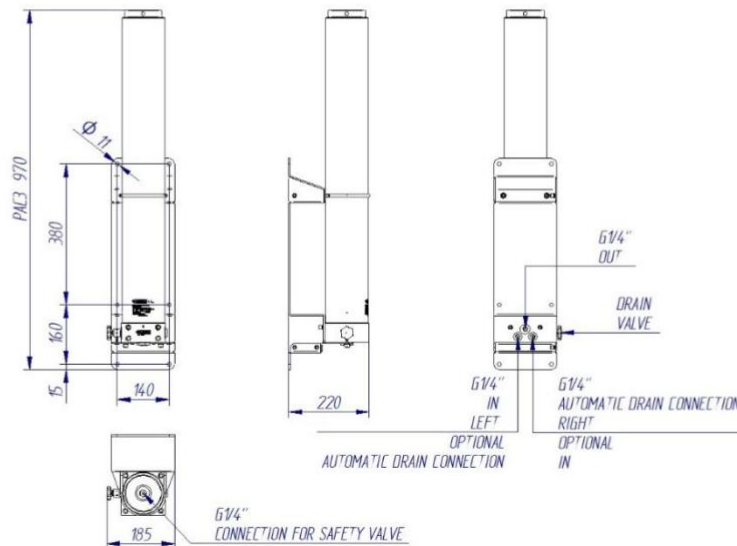
WALL MOUNTING PAC2



FILTER	DESCRIPTION	CODE
PAC2	Filter Tower PAC2 with wall mounting system without cartridge with INLET on the LEFT, with maintaining pressure valve, PED CERTIFIED	PA100-291
PAC2	Filter Tower PAC2 with wall mounting system without cartridge with INLET on the RIGHT, with maintaining pressure valve, PED CERTIFIED	PA100-292



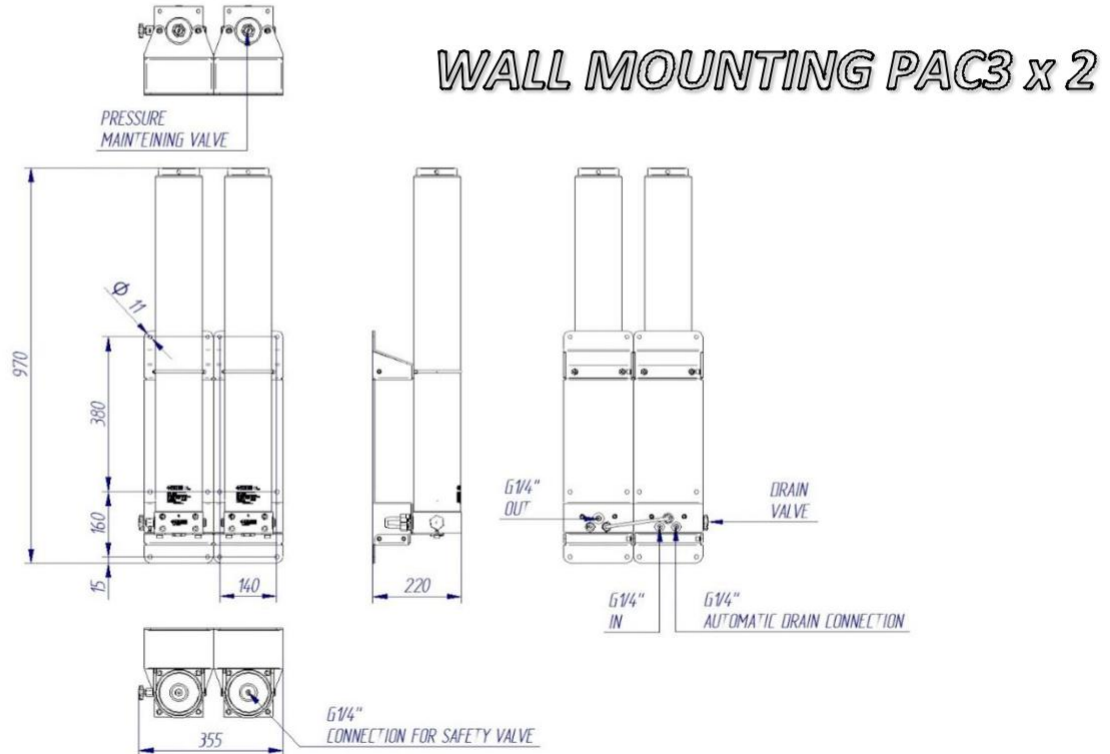
WALL MOUNTING PAC3



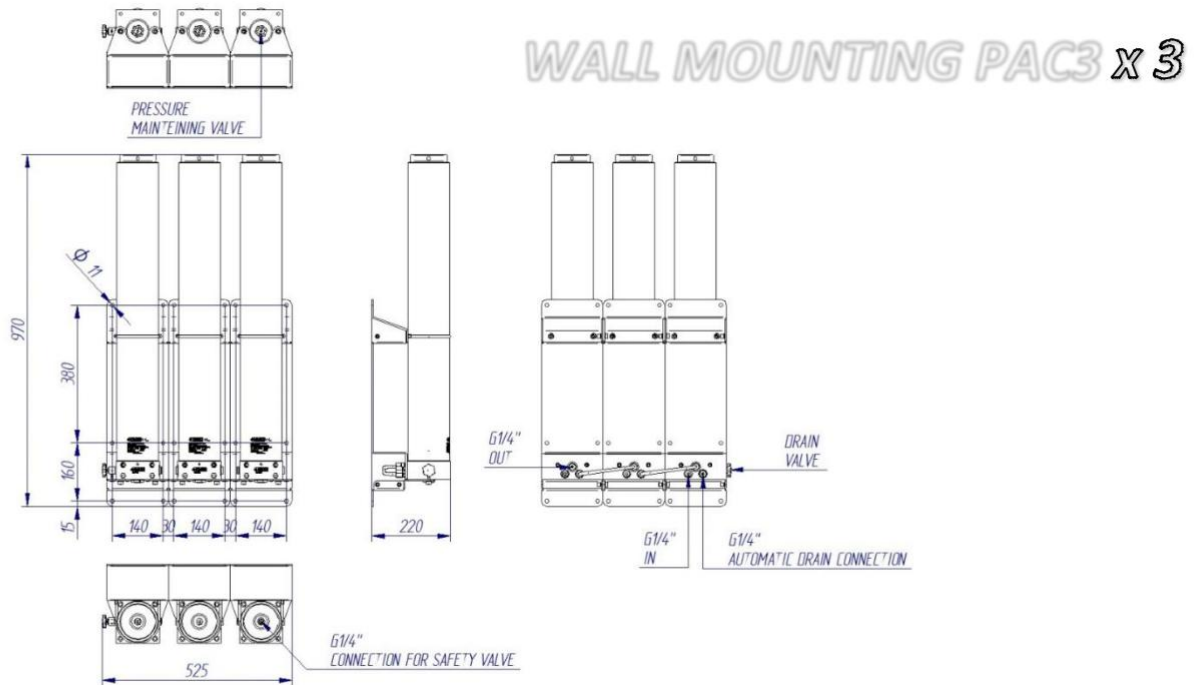
FILTER	DESCRIPTION	CODE
PAC3	Filter Tower PAC3 with wall mounting system without cartridge with INLET on the LEFT, with maintaining pressure valve, PED CERTIFIED	PA100-391
PAC3	Filter Tower PAC3 with wall mounting system without cartridge with INLET on the RIGHT, with maintaining pressure valve, PED CERTIFIED	PA100-392

SUPPLIED WITHOUT SAFETY VALVE

MADE IN ITALY BY NARDI COMPRESSORI



FILTER	DESCRIPTION	CODE
PAC3+PAC3	2 Filter Towers PAC3 with wall mounting system without cartridge with INLET on the LEFT, with maintaining pressure valve, PED CERTIFIED	PA100-394



FILTER	DESCRIPTION	CODE
PAC3+PAC3+PAC3	3 Filter Towers PAC3 with wall mounting system without cartridge with INLET on the LEFT, with maintaining pressure valve, PED CERTIFIED	PA100-396

SUPPLIED WITHOUT SAFETY VALVE

COMPONENTS FOR FILTERING SYSTEM



DESCRIPTION	CODE
-------------	------

Filter connection G1/4" for tube 06 mm (without washer)	PA100-151
---	-----------

Bonded washer gasket G1/4"	HR701-012
----------------------------	-----------



DESCRIPTION	CODE
-------------	------

Filter connection G1/4" for tube 06mm with check valve (without washer)	PA100-149
---	-----------

Bonded washer gasket G1/4"	HR701-012
----------------------------	-----------



DESCRIPTION	CODE
-------------	------

Filter connection G1/4" for tube 08mm (without washer)	PA100-152
--	-----------

Bonded washer gasket G1/4"	HR701-012
----------------------------	-----------



DESCRIPTION	CODE
-------------	------

Filter connection G1/4" for tube 08mm with check valve (without washer)	PA100-150
---	-----------

Bonded washer gasket G1/4"	HR701-012
----------------------------	-----------



DESCRIPTION	CODE
-------------	------

Drain valve G1/4"	AT140-100
-------------------	-----------



DESCRIPTION	CODE
-------------	------

Closure plug G1/4"	HR176-002
--------------------	-----------

AUTOMATIC DRAIN SYSTEM

The **NARDI COMPRESSORI** condensation drain system is the most efficient device on the market. Its small dimensions make its installation very simple. Inside this drain system you can find the **NARDI SLOW FLOW SYSTEM**, a series of **PATENTED** components which reduce the waste of compressed gases during discharge to the minimum, with a very low depressurization of the whole system. Compared to traditional condensation drains, the **NARDI AUTOMATIC DRAIN SYSTEM** needs no gas separators from oil and water, because condensation runs directly into the liquid collection container. There is no need for extra components to be installed in the compressor, and at the same time it reduces the loss of compressed air or gas by 80%.



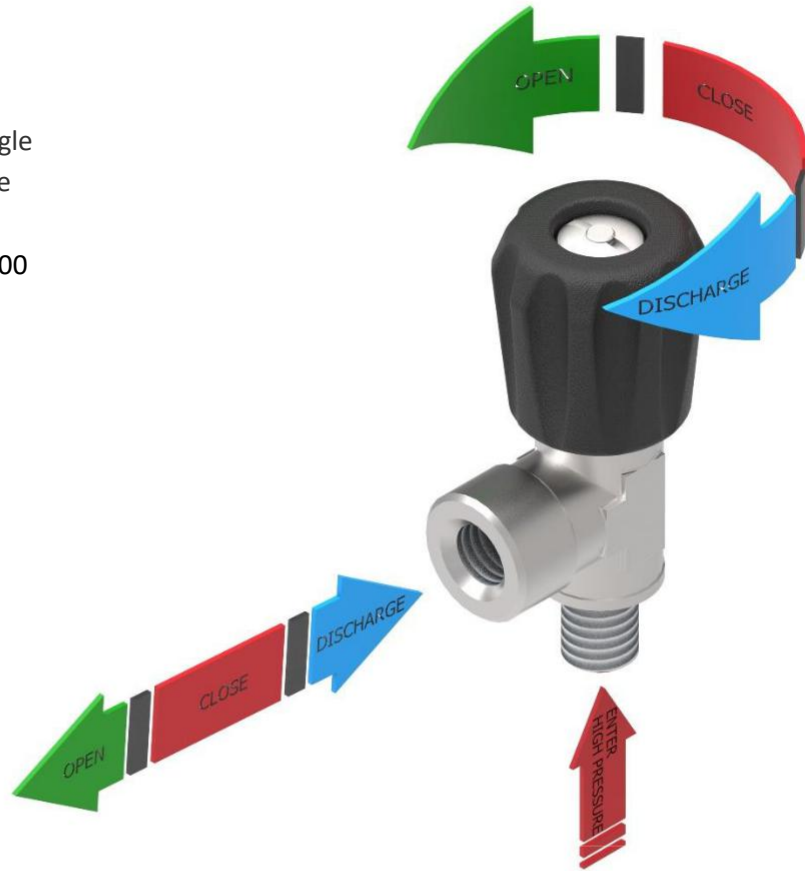
DESCRIPTION	CODE
AUTOMATIC CONDENSATE DRAIN for compressor PACIFIC 16 – 23 – 27 – 30 electric version with tube for connection to separator (for electronic control)	PA105-011
AUTOMATIC CONDENSATE DRAIN for compressor PACIFIC 16 – 23 – 27 – 30 GASOLINE and DIESEL version with timer 12 volt with tube for connection to separator	PA105-012
AUTOMATIC CONDENSATE DRAIN for compressor PACIFIC 16 – 23 – 27 – 30 with timer 220 volt with cable for single phase, with tube for connection to separator	PA105-013
AUTOMATIC CONDENSATE DRAIN for compressor PACIFIC 35 electric version with tube for connection to separator (for electronic control)	PA105-015
AUTOMATIC CONDENSATE DRAIN for compressor PACIFIC 35 GASOLINE and DIESEL version with timer 12 volt, with tube for connection to separator	PA105-016
AUTOMATIC CONDENSATE DRAIN for compressor PACIFIC 35 with timer 220 volt, with cable for single phase, with tube for connection to separator	PA105-017
AUTOMATIC CONDENSATE DRAIN for compressor PACIFIC 48 – 60 electric version with tube for connection to separator (for electronic control)	PA105-020
AUTOMATIC CONDENSATE DRAIN for compressor PACIFIC 68 – 85 electric version with tube for connection to separator (for electronic control)	PA105-025

FILLING VALVES



HAND WHEEL VALVES

The hand-wheel valve is used for the filling of compressed air bottles with hoses. The valves open, close and discharge with a single operation, by turning a single knob and they are designed for mobile use. The valves are in conformity with UNI 144-2 2000 standards for filling breathing air.



DESCRIPTION	CODE
Hand wheel valve G1/4" (max 250 BAR)	PA112-100

DESCRIPTION	CODE
Hand wheel valve with manometer G1/4" (max 250 BAR)	PA112-205

HAND WHEEL VALVES



DESCRIPTION	CODE
Hand wheel valve DIN 200 (max 250 BAR)	PA112-110



DESCRIPTION	CODE
Hand wheel valve with manometer DIN 200 (max 250 BAR)	PA112-215



DESCRIPTION	CODE
Hand wheel valve DIN 200 safety flow stop (max 250 BAR)	PA112-111



DESCRIPTION	CODE
Hand wheel valve with manometer DIN 200 flow stop (max 250 BAR)	PA112-216



DESCRIPTION	CODE
Hand wheel valve DIN 200 + INT 200 (YOKE) (max 250 BAR)	PA112-115



DESCRIPTION	CODE
Hand wheel valve with manometer DIN 200 + INT 200 (YOKE)	PA112-220

FILLING VALVES



HAND WHEEL VALVES



DESCRIPTION	CODE
Hand wheel valve INT 200 (max 250 BAR)	PA112-105



DESCRIPTION	CODE
Hand wheel valve with manometer INT 200 (YOKE) (max 250 BAR)	PA112-210



DESCRIPTION	CODE
Hand wheel valve with over pressure valve G1/4'' (max 250 BAR)	PA112-204



DESCRIPTION	CODE
Hand wheel valve with over pressure valve G1/4'' (max 250 BAR)	PA112-214



DESCRIPTION	CODE
Hand wheel valve with over pressure valve DIN 200 flow stop	PA112-217



DESCRIPTION	CODE
Hand wheel valve with over pressure valve DIN 200 + INT 200 (YOKE)	PA112-219

HAND WHEEL VALVES



DESCRIPTION	CODE
Hand wheel valve with over pressure valve INT 200 (YOKE) (max 250 BAR)	PA112-209



DESCRIPTION	CODE
Reduction from DIN 200 to INT 200 (YOKE)	PA112-109



DESCRIPTION	CODE
Hand wheel valve G1/4" (max 350 BAR)	PA112-101



DESCRIPTION	CODE
Hand wheel valve with manometer G1/4" (max 350 BAR)	PA112-205



DESCRIPTION	CODE
Hand wheel valve DIN 300 (max 350 BAR)	PA112-120



DESCRIPTION	CODE
Hand wheel valve with manometer DIN 300 (max 350 BAR)	PA112-225

FILLING VALVES



HAND WHEEL VALVES



DESCRIPTION	CODE
Hand wheel valve DIN 300 safety flow stop (max 350 BAR)	PA112-121



DESCRIPTION	CODE
Hand wheel valve with manometer DIN 300 flow stop (max 350 BAR)	PA112-226



DESCRIPTION	CODE
Hand wheel valve G1/4'' (max 250 BAR) NITROX	PA112-300



DESCRIPTION	CODE
Hand wheel valve with manometer G1/4'' (max 350 BAR) NITROX	PA112-305



DESCRIPTION	CODE
Hand wheel valve DIN 200 (max 250 BAR) NITROX	PA112-310



DESCRIPTION	CODE
Hand wheel valve with manometer DIN 200 (max 250 BAR) NITROX	PA112-316

REDUCTION VALVES



DESCRIPTION	CODE
Reduction with over pressure valve from DIN 300 to DIN 200	PA112-070



DESCRIPTION	CODE
Reduction with over pressure valve from DIN 300 to DIN 200 + INT 200	PA112-071



DESCRIPTION	CODE
Reduction with over pressure valve from DIN 300 to INT 200 (YOKE)	PA112-072

FILLING PANEL VALVES - Stainless Steel

This STAINLESS STEEL robust lever valve is manufactured for the filling of compressed air bottles. The valves open, close and discharge with a single operation of the lever. These valves are designed to be assembled on filling panels and are recommended for frequent filling of bottles.



DESCRIPTION

Lever valve G3/8" Female
(max 350 BAR)

CODE

PA112-530

DESCRIPTION

Lever valve G1/4" Male
(max 350 BAR)

CODE

PA112-535

FILLING PANEL VALVES



DESCRIPTION	CODE
Lever valve DIN 200 safety flow stop (max 250 BAR)	PA112-542



DESCRIPTION	CODE
Lever valve DIN 300 safety flow stop (max 350 BAR)	PA100-552



DESCRIPTION	CODE
Lever valve 1m hose DIN 200 safety flow stop (max 250 BAR)	PA112-541



DESCRIPTION	CODE
Lever valve 1m hose DIN 300 safety flow stop (max 350 BAR)	PA112-551

FILLING VALVES



DESCRIPTION	CODE
Lever valve DIN 200 safety flow stop (max 250 BAR)	PA112-642



LEVER VALVES

DESCRIPTION	CODE
Lever valve DIN 300 safety flow stop (max 350 BAR)	PA100-652

MAINTENANCE KIT for FILLING VALVES



DESCRIPTION	CODE
Full Maintenance kit FOR ALL FILLING VALVE MODELS	PA112-905



DESCRIPTION	CODE
Maintenance kit mechanical seals FOR ALL FILLING VALVE MODELS	PA112-906

FILLING PANELS

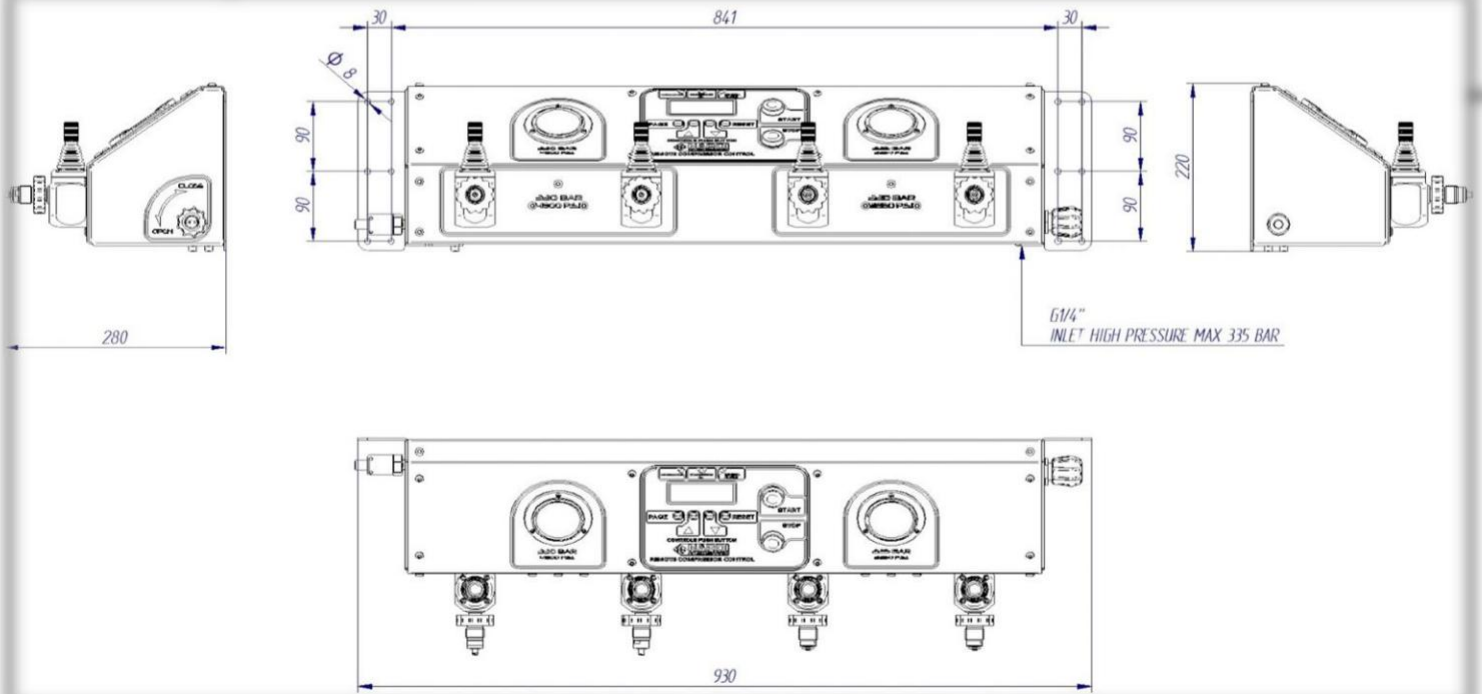
Filling Panels by **NARDI COMPRESSORI** are completely stainless steel coated and they have four (4) filling connections. These can be supplied for fills in 200BAR, 300BAR or both pressures. The installation of an integrated pressure reducer allows simultaneous fills in dual pressure. The **NARDI COMPRESSORI FITTINGS** can sustain bottles, connected directly to the valves, with a weight up to max 15kg.

Filling panels can be installed in environments with temperatures between -5°C and + 45°C.

The Filling Panel can be positioned in a separate room away from the compressor. If a remote controller is installed it can communicate with the compressor and obtain all the information directly on the controller.

Therefore, users can turn ON and switch OFF the compressor, check pressures and temperatures and filter status directly from remote controller.

All valves on the **NARDI COMPRESSORI FILLING PANELS** are equipped with a safety device which allows airflow only if the valve is correctly connected to the bottle fittings.



FILLING PANELS



FILLING PANELS



DESCRIPTION	CODE
-------------	------

Filling panel with 4 hoses
PN 200 bar

PA118-005



DESCRIPTION	CODE
-------------	------

Filling panel with 4 hoses
PN 300 bar

PA118-010



DESCRIPTION	CODE
-------------	------

Filling panel with 2 hoses PN 200 bar
+ 2 hoses PN 300 bar

PA118-015



DESCRIPTION	CODE
-------------	------

Filling panel with 4 hoses PN 200 bar
with compressor remote controller

PA118-055



DESCRIPTION	CODE
-------------	------

Filling panel with 4 hoses PN 300 bar
with compressor remote controller

PA118-060

DESCRIPTION	CODE
-------------	------

Filling panel with 2 hoses PN 200 bar
+ 2 hoses PN300 whit remote
controller

PA118-065

FILLING PANELS



DESCRIPTION	CODE
Filling panel with 4-levers DIN 200	PA118-106



DESCRIPTION	CODE
Filling panel with 4-levers DIN 300	PA118-111



DESCRIPTION	CODE
Filling panel with 2-levers DIN 200 + 2-levers DIN 300	PA118-116



DESCRIPTION	CODE
Filling panel with 4-levers DIN 200 with compressor remote controller	PA118-156



DESCRIPTION	CODE
Filling panel with 4-levers DIN 300 with compressor remote controller	PA118-161



DESCRIPTION	CODE
Filling panel with 2-levers DIN 200 + 2-levers DIN 300 with compressor remote controller	PA118-166

FILLING PANELS



FILLING PANELS



DESCRIPTION

CODE

Filling panel with 4- levers for hoses
PN200 bar

PA118-211



DESCRIPTION

CODE

Filling panel with 4- levers for hoses
PN300 bar

PA118-215



DESCRIPTION

CODE

Filling panel with 2-levers PN200 bar
+ 2-levers PN300 bar for hoses

PA118-256



DESCRIPTION

CODE

Filling panel with 4-levers PN200 bar
for hoses with remote controller

PA118-206



DESCRIPTION

CODE

Filling panel with 4-levers PN300 bar
for hoses with remote controller

PA118-261

DESCRIPTION

CODE

Filling panel with 2-levers PN200 bar
+ 2-levers PN300 bar with remote
controller

PA118-265

HOSES & HAND WHEEL VALVES



DESCRIPTION	CODE
-------------	------

Hose 1m 1/4"G

PA113-100



DESCRIPTION	CODE
-------------	------

Hose 1m 1/4"G

PA113-110



DESCRIPTION	CODE
-------------	------

DIN 200 with flow stop for hoses

PA112-600



DESCRIPTION	CODE
-------------	------

DIN 300 with flow stop for hoses

PA112-601

SAFETY VALVES



DESCRIPTION	CODE
SAFETY VALVE V ₁ - PED 2014/68/UE - From 70 to 160 Bar / From 1000 to 2350 psi	PA110-101
SAFETY VALVE V ₂ - PED 2014/68/UE - From 160 to 250 Bar / From 2350 to 3600 psi	PA110-102
SAFETY VALVE V ₃ - PED 2014/68/UE - From 250 to 365 Bar / From 3600 to 5300 psi	PA110-103
SAFETY VALVE V ₄ - PED 2014/68/UE - From 365 to 425 Bar / From 5300 to 6000 psi	PA110-104

DESCRIPTION	CODE
CONVEYED SAFETY VALVE V ₁ - PED 2014/68/UE - From 70 to 160 Bar / From 1000 to 2350 psi	PA110-111
CONVEYED SAFETY VALVE V ₂ - PED 2014/68/UE - From 160 to 250 Bar / From 2350 to 3600 psi	PA110-112
CONVEYED SAFETY VALVE V ₃ - PED 2014/68/UE - From 250 to 365 Bar / From 3600 to 5300 psi	PA110-113

WHEN ORDERING SAFETY VALVES KINDLY SPECIFY PRESSURE SETTINGS

REMOTE AIR CONTROL SYSTEM

The **NARDI AIR CONTROL SYSTEM** is a versatile digital device to monitor air quality and to safeguard and protect human lives. This apparatus has been designed for a continuous monitoring of gases in the environment, in hyperbaric chambers and other medical applications or working fields.

Sensors installed :

- Oxygen
- Carbon Monoxide
- Carbon Dioxide
- Humidity
- Temperature of gases

The AIR CONTROL SYSTEM is a full digital Analyzer with a colored screen:

Displays volume percentage of Oxygen in the environment 0,0 – 100%. Resolution 0,1%. Long life electrochemical sensor.

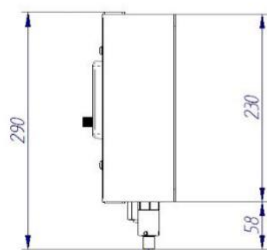
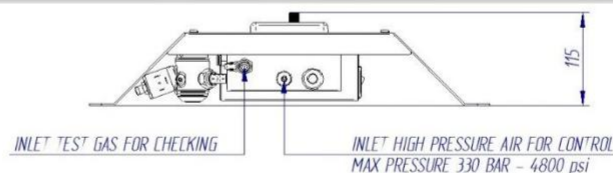
Wide measuring scale for concentration of Carbon dioxide (from 0-500ppm 0-0.05% to 0-100%). Resolution 20 ppm.

Concentration of Carbon monoxide in the environment 0-50 ppm or 0-300 ppm; Resolution 1 ppm. Long life electrochemical sensor.

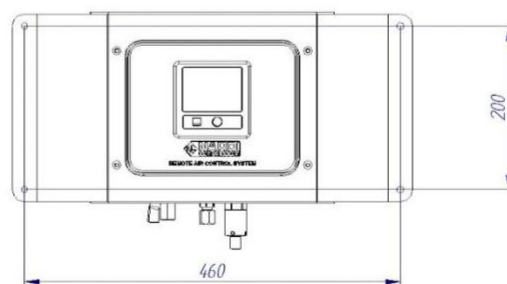
Humidity reading of RH in the environment 0,0 – 99,9% and absolute humidity in mg/m³ or PPMv. New generation captive sensor.

Measures gas temperatures in the environment -20 +80°C.

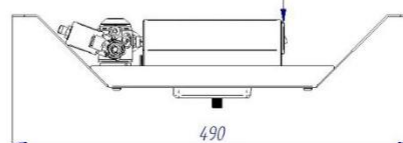
Monitors the state of the sensors installed.



Safety valve 330 bar - 4800 psi



POWER Connector 100-240 Volt 50-60 hz



REMOTE AIR CONTROL SYSTEM



DESCRIPTION	CODE
NARDI REMOTE AIR CONTROL SYSTEM complete	PA111-510

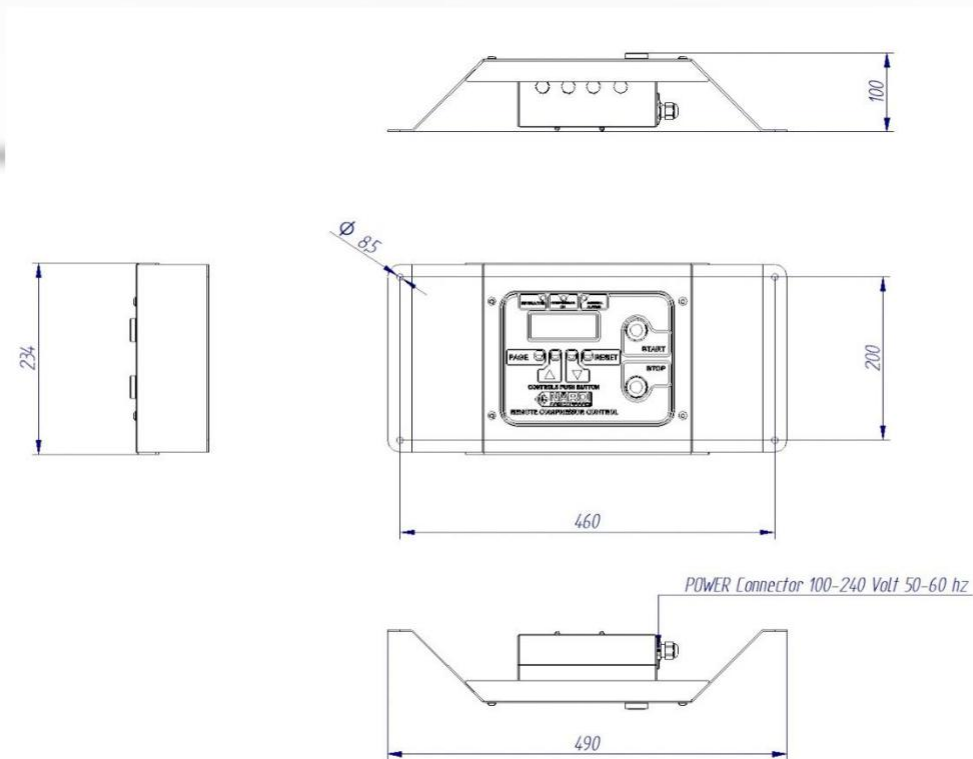
DESCRIPTION OF ACCESSORIES	LIFE TIME	CODE
OXYGEN Sensor	2 YEARS	PA111-032
CO Sensor	4 YEARS	PA111-302
CO ² Sensor	5 YEARS	PA111-310
H ² O Sensor	5 YEARS	PA111-307

COMPRESSOR REMOTE CONTROLLER

This brand new **Remote Controller** was designed for customers who need to control the work of their compressor from a distance.
(Max distance allowed 50mt)

The **REMOTE COMPRESSOR CONTROL** device is a clone of the Automatic Control System installed on NARDI compressors, this means that operators can perform all settings and filling applications they normally do directly from their compressor through the remote version installed in a different location.

NARDI COMPRESSORI also designed and manufactured a special frame of the same color and material of its silenced compressor walls to have an elegant and uniform look and for a major safeguard of the controller.



REMOTE CONTROLLER



COMPRESSOR REMOTE CONTROLLER



DESCRIPTION

CODE

NARDI REMOTE CONTROLLER complete

PA116-700

DESCRIPTION ACCESSORIES

CODE

CABLE for connecting remote controller to compressor

PA118-999



PRECISION of DUCTING PIPES

All pipes supplied by NARDI COMPRESSORI are in stainless steel for a higher resistance against corrosion. The pressures indicated in the chart below correspond to a use of less than 120°C and over -10°C. For calculations of ducting installations, below are guidelines indicating an airflow inside ducting of 6-15 m/s. All different pipes are supplied in a standard measurement of 6000 mm.

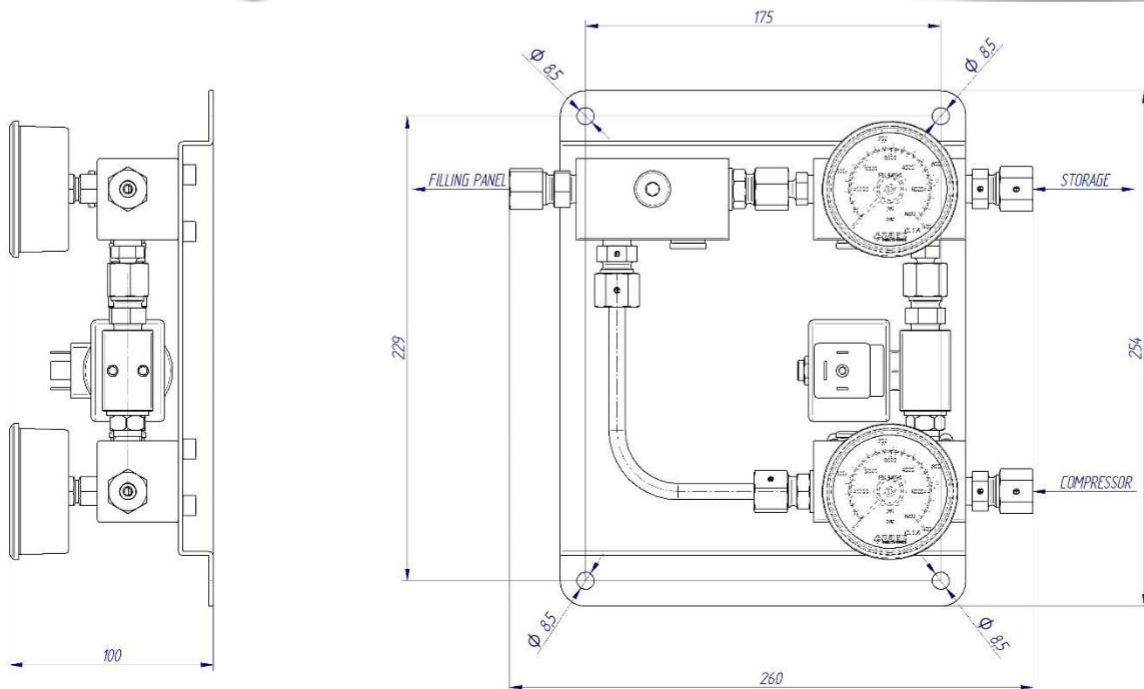
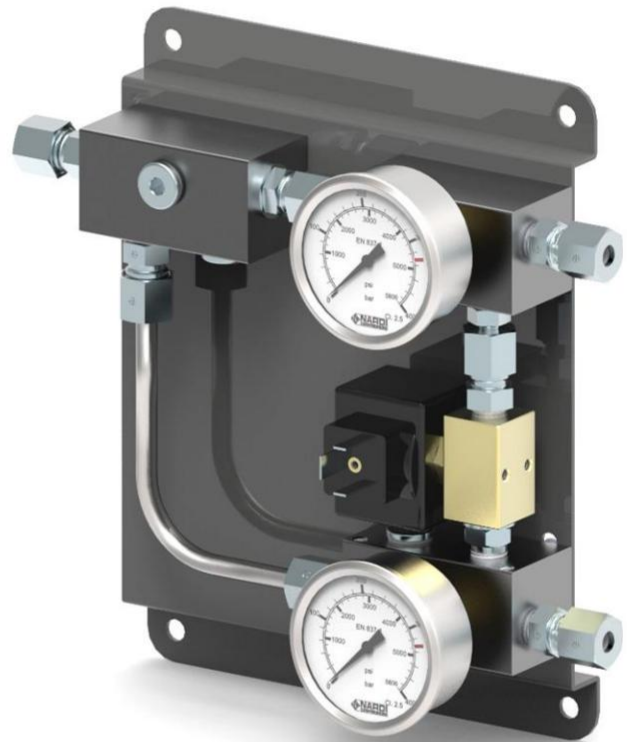
DESCRIPTION	Working Pressure	CODE
Pipe tube diam. 6 mm thickness 1 mm	380 bar / 5500 psi	VT106-010
Pipe tube diam. 8 mm thickness 1 mm	287 bar / 4150 psi	VT108-010
Pipe tube diam. 8 mm thickness 1,5 mm	466 bar / 6750 psi	VT108-015
Pipe tube diam. 12 mm thickness 1 mm	191 bar / 2770 psi	VT112-010
Pipe tube diam. 12 mm thickness 1,5 mm	315 bar / 4570 psi	VT112-015
Pipe tube diam. 15 mm thickness 1 mm	150 bar / 2170 psi	VT115-010
Pipe tube diam. 18 mm thickness 1 mm	127 bar / 1840 psi	VT118-010

AUTOMATIC SELECTOR BY-PASS

This is a very important device designed to speed up the filling procedure of bottles on a filling panel.

The **AUTOMATIC SELECTOR BY-PASS** is installed between the compressor, the storage and the filling panel. Once the operator starts taking air from the storage by opening the valves on the filling panel, the compressor turns ON automatically and sends air into the filling panel. If, the pressure between the filling panel and the storage are equal, the **BY-PASS** device will stop airflow from storage and all the air compressed by the compressor will be directed into the filling panel.

When the bottles connected to the filling panel will reach maximum pressure (fully charged) the **By-Pass** selector will keep the compressor running and diverts the compressed air into the storage tanks automatically maintaining everything in pressure. Maximum working pressure 450 BAR, connecting fittings diam.8mm, compressor accessories with electronic commands.



DESCRIPTION

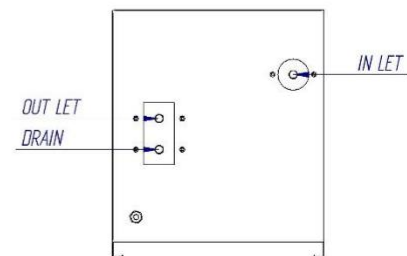
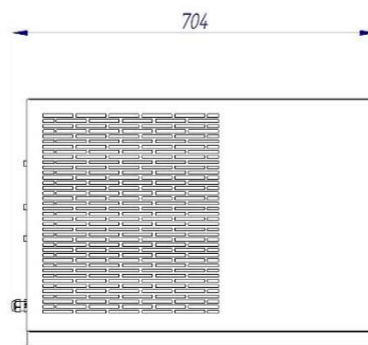
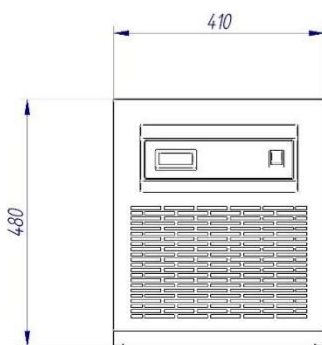
AUTOMATIC SELECTOR BY-PASS for compressors with Electronic Controls

CODE

PA011-049

DRYER

The **Refrigerated Dryer** by **NARDI COMPRESSORI** is a significant accessory to improve the efficiency of the air filtering process. This dryer, which is positioned between the filtering system and the compressor, works at a maximum pressure of 425 BAR, it refrigerates air at a temperature of 3°C and condensates water vapor. Such air treatment dehydrates the air going into the filtering system and the lifetime of cartridges would increase considerably (between 3 to 10 times), depending on the dimensions of the compressor and the environment working temperature. By installing a **NARDI COMPRESSORI Refrigerated DRYER** you will not only protect the environment but most importantly you will reduce your maintenance costs.



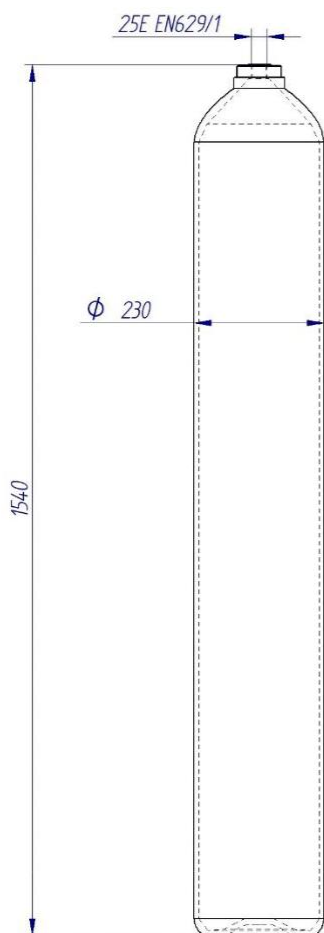
DESCRIPTION

Refrigeration Dryer High Pressure

CODE

PA011-050

SINGLE BOTTLE



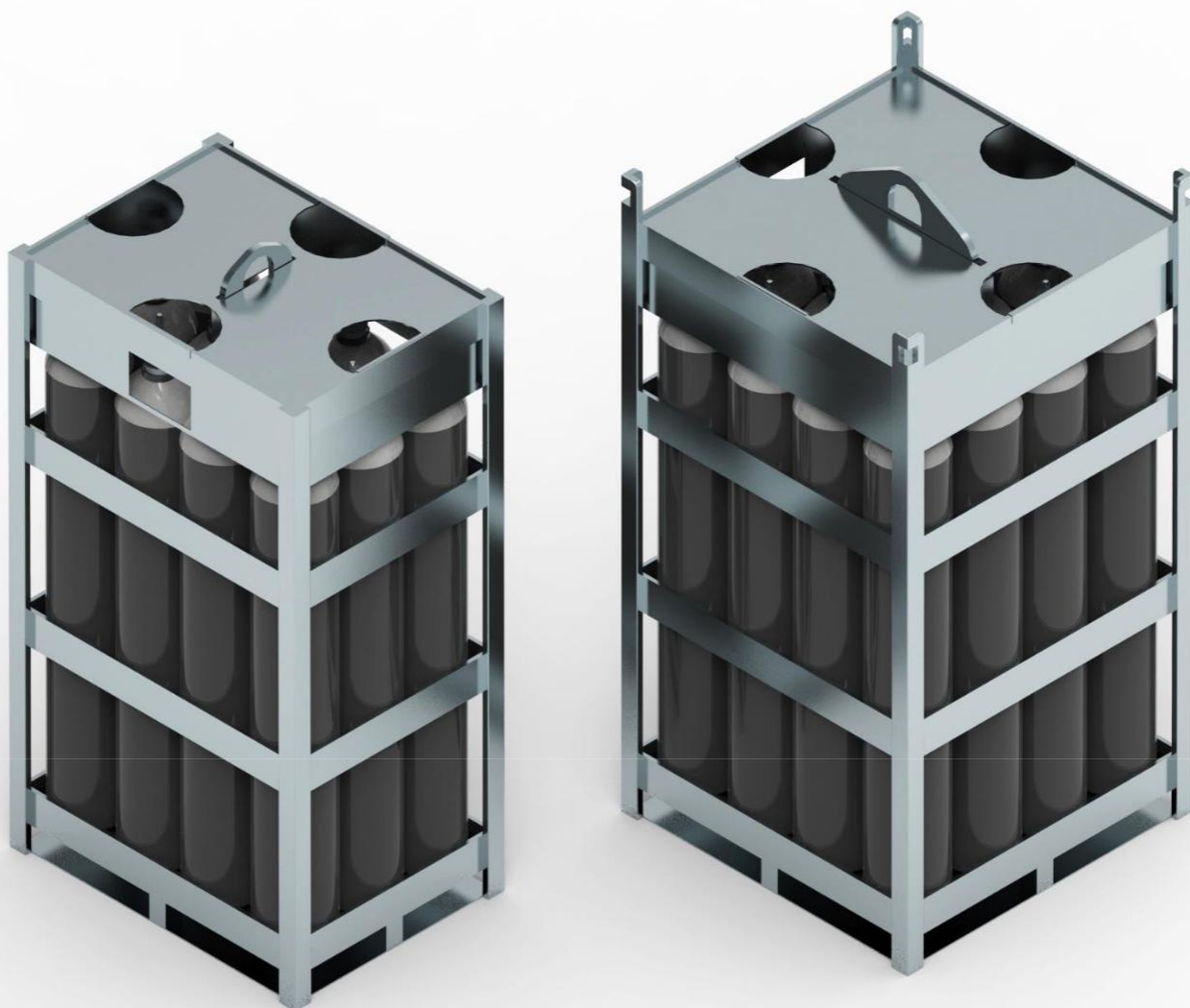
DESCRIPTION	Working Pressure	CODE
BOTTLE 50L. 300 BAR	300 bar / 4350 psi	PA011-002
BOTTLE 50L. 350 BAR	350 bar / 5100 psi	PA011-003
BOTTLE 50L. 500 BAR	500 bar / 7250 psi	PA011-005

STORAGE FOR PACIFIC M and MX



DESCRIPTION	Working Pressure	CODE
STOCK FOR PACIFIC M 2 BOTTLES 50L.	300 bar / 5100 psi	PA011-008
STOCK FOR PACIFIC MX 2 BOTTLES 50L.	300 bar / 5100 psi	PA011-009

CYLINDER PACKS



DESCRIPTION	Working Pressure	CODE
CYLINDER PACK 12 BOTTLES	300 bar / 4350 psi	PA011-010
CYLINDER PACK 16 BOTTLES	300 bar / 4350 psi	PA011-011

ACCESSORIES FOR STORAGE PACKS



DESCRIPTION	CODE
Connection W30x2 ISO 5145/CEN3	PA119-170



DESCRIPTION	CODE
Reduction 25E x 1/4"G 350 BAR	PA005-013



DESCRIPTION	CODE
Manifold G1/4" 350 BAR	PA112-099



DESCRIPTION	CODE
Connection G1/4" 350 BAR	HR352-002



DESCRIPTION	CODE
Connection G1/4" 350 BAR	HR350-002



DESCRIPTION	CODE
Connection G1/4" 350 BAR	HR346-002

REDUCER



DESCRIPTION

CODE

REDUCER 1/4" G MAX IN 425 BAR OUT FROM 50 TO 425 – MAX FLOW RATE 60 m³/h

PA115-101



DESCRIPTION

CODE

REDUCER N² MAX IN 300 BAR OUT FROM 0 TO 20 BAR – MAX FLOW RATE 20 m³/h

PA111-203-20

REDUCER N² MAX IN 300 BAR OUT FROM 0 TO 40 BAR – MAX FLOW RATE 40 m³/h

PA111-203-40

REDUCER N² MAX IN 300 BAR OUT FROM 0 TO 60 BAR – MAX FLOW RATE 150 m³/h

PA111-203



DESCRIPTION

CODE

REDUCER N² MAX IN 300 BAR OUT FROM 0 TO 40 BAR – MAX FLOW RATE 500 m³/h

PA115-102

MANOMETERS



DESCRIPTION	CODE
Manometer diam. 63 / connection bottom / 0-300 Bar	PA112-029
Manometer diam. 63 / connection bottom / 0-400 Bar	PA112-030
Manometer diam. 63 / connection rear / 0-300 Bar / Glycerine	PA112-050
Manometer diam. 63 / connection rear / flange / 0-16 Bar	PA112-080
Manometer diam. 63 / connection rear / flange / 0-40 Bar	PA112-082
Manometer diam. 63 / connection rear / flange / 0-100 Bar	PA112-084
Manometer diam. 63 / connection rear / flange / 0-400 Bar	PA112-040
Manometer diam. 63 / connection rear / flange / 0-600 Bar Glycerine	PA112-080

MIXER FOR NITROX and TRIMIX



Top of the world **Mixer**, the only device with a unique and totally autonomous system.

The **NARDI COMPRESSORI TT-MIX PRO** is an assurance of work-in-safety with a very precise mixing control of oxygen among other benefits, such as :

- Automatic blending: no need of operators during blending : the TT-MIX can work on its own.
- Value of mix : it calculates automatically the m³ of gas being utilized and will give you final of mix.
- Precision : by installing two electronic reducers it will be even easier to connect the **MIXER** to the oxygen and helium bottles (setting of pressure regulators at 9 BAR)



DESCRIPTION

MIXER TT-MIX PRO

CODE

PA111-102

ACCESSORIES FOR MIXER



DESCRIPTION	CODE
Regulator for HELIUM	PA111-201



DESCRIPTION	CODE
Regulator for OXYGEN	PA111-200



DESCRIPTION	CODE
Connection tube O40 x 1 1/2" G	PA111-207



DESCRIPTION	CODE
Connection tube O40 x 1 1/2" G	PA111-206



DESCRIPTION	CODE
Flexible tube O 40 length 4m	PA111-208



DESCRIPTION	CODE
INOX CLAMP O 35-50	PA111-209

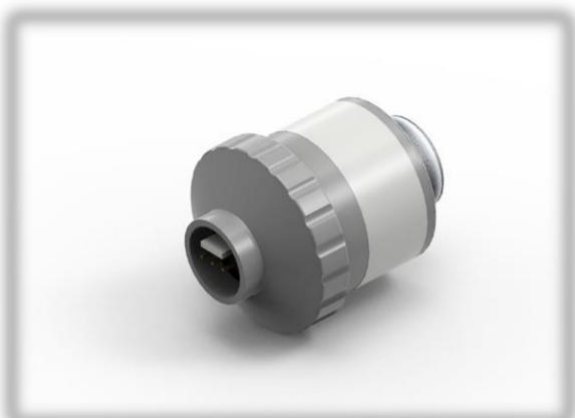
ACCESSORIES FOR MIXER



DESCRIPTION	CODE
Reduction 3/4''G x 1 1/4''G	PA111-205

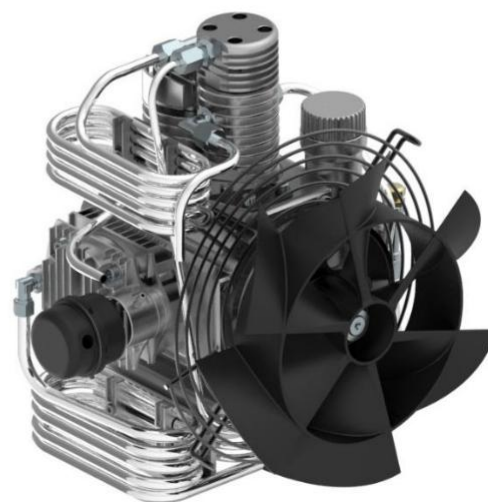
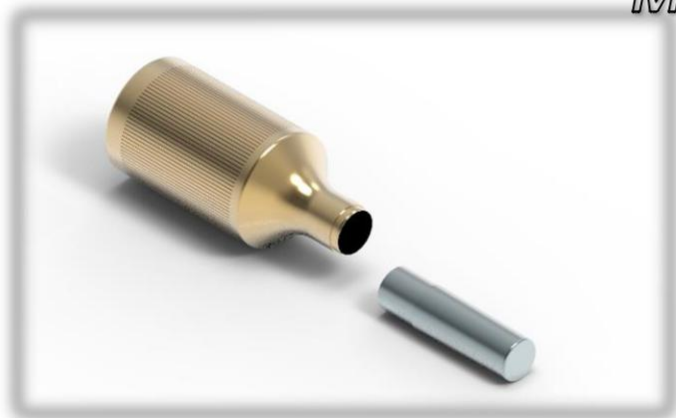


DESCRIPTION	CODE
Relay	PA111-215



DESCRIPTION	CODE
OXYGEN Sensor	PA111-030

MAINTENANCE KITS - ATLANTIC



DESCRIPTION	CODE
Tool for ATLANTIC piston rings 4° stage	AT999-003

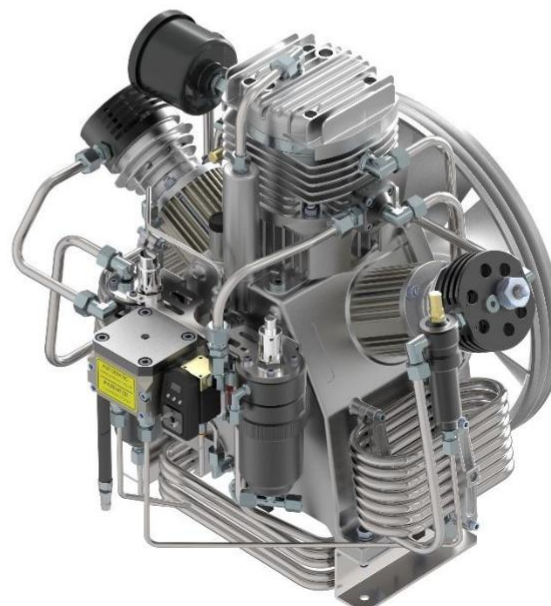
DESCRIPTION	CODE
SERVICE KIT ATLANTIC 60 – 500 HR	AT001-060-00-0500
SERVICE KIT ATLANTIC 60 – 1000 HR	AT001-060-00-1000
SERVICE KIT ATLANTIC 100 – 500 HR	AT001-100-00-0500
SERVICE KIT ATLANTIC 100 – 1000 HR	AT001-100-00-1000

MAINTENANCE KITS - PACIFIC



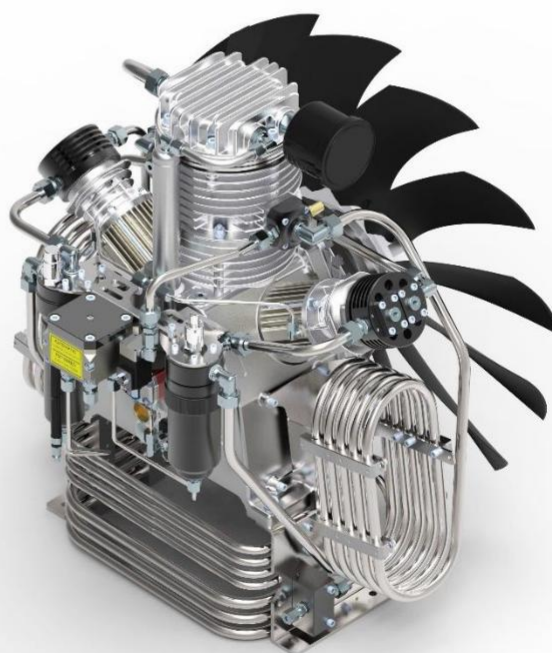
DESCRIPTION	CODE
-------------	------

Tool for PACIFIC valves 3-4° stage	PA012-002
------------------------------------	-----------



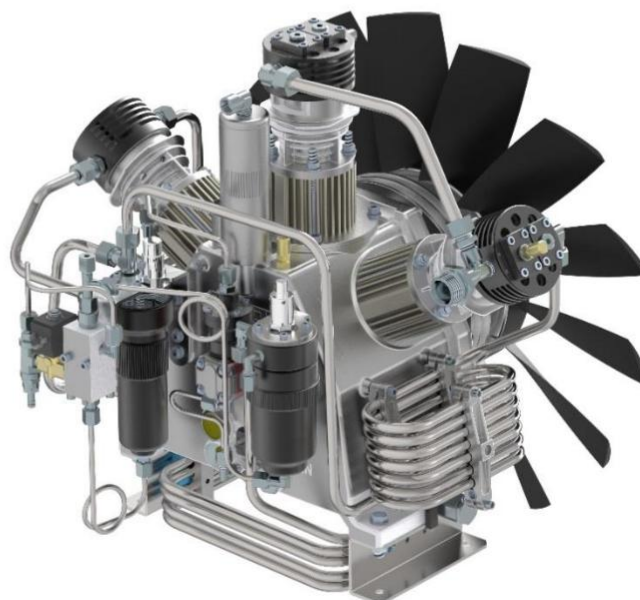
DESCRIPTION	CODE
SERVICE KIT PACIFIC 16 – 500 HR	PA001-160-0500
SERVICE KIT PACIFIC 16 – 1000 HR	PA001-160-1000
SERVICE KIT PACIFIC 16 – 2000 HR	PA001-160-2000
SERVICE KIT PACIFIC 23 – 500 HR	PA001-230-0500
SERVICE KIT PACIFIC 23 – 1000 HR	PA001-230-1000
SERVICE KIT PACIFIC 23 – 2000 HR	PA001-230-2000
SERVICE KIT PACIFIC 27 – 500 HR	PA001-270-0500
SERVICE KIT PACIFIC 27 – 1000 HR	PA001-270-1000
SERVICE KIT PACIFIC 27 – 2000 HR	PA001-270-2000
SERVICE KIT PACIFIC 30 – 500 HR	PA001-300-0500
SERVICE KIT PACIFIC 30 – 1000 HR	PA001-300-1000
SERVICE KIT PACIFIC 30 – 2000 HR	PA001-300-2000
SERVICE KIT PACIFIC 35 – 500 HR	PA001-350-0500
SERVICE KIT PACIFIC 35 – 1000 HR	PA001-350-1000
SERVICE KIT PACIFIC 35 – 2000 HR	PA001-350-2000

MAINTENANCE KITS – PACIFIC MX



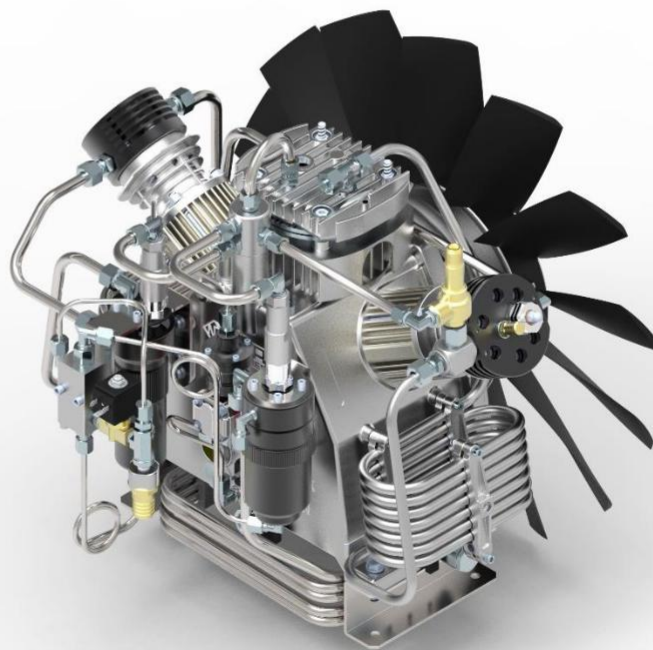
DESCRIPTION	CODE
SERVICE KIT PACIFIC 48 – 500 HR	PA001-480-0500
SERVICE KIT PACIFIC 48 – 1000 HR	PA001-480-1000
SERVICE KIT PACIFIC 48 – 2000 HR	PA001-480-2000
SERVICE KIT PACIFIC 60 – 500 HR	PA001-600-0500
SERVICE KIT PACIFIC 60 – 1000 HR	PA001-600-1000
SERVICE KIT PACIFIC 60 – 2000 HR	PA001-600-2000
SERVICE KIT PACIFIC 68 – 500 HR	PA001-680-0500
SERVICE KIT PACIFIC 68 – 1000 HR	PA001-680-1000
SERVICE KIT PACIFIC 68 – 2000 HR	PA001-680-2000
SERVICE KIT PACIFIC 85 – 500 HR	PA001-850-0500
SERVICE KIT PACIFIC 85 – 1000 HR	PA001-850-1000
SERVICE KIT PACIFIC 85 – 2000 HR	PA001-850-2000

MAINTENANCE KITS - BOOSTER



DESCRIPTION	CODE
SERVICE KIT BOOSTER 55-350 – 1000 HR	BON2-55-350-1000
SERVICE KIT BOOSTER 55-350 – 2000 HR	BON2-55-350-2000
SERVICE KIT BOOSTER 55-350 – 3000 HR	BON2-55-350-3000
SERVICE KIT BOOSTER 55-350 – 4000 HR	BON2-55-350-4000
SERVICE KIT BOOSTER 55-350 – 6000 HR	BON2-55-350-6000
SERVICE KIT BOOSTER 140-350 – 1000 HR	BON2-140-350-1000
SERVICE KIT BOOSTER 140-350 – 2000 HR	BON2-140-350-2000
SERVICE KIT BOOSTER 140-350 – 3000 HR	BON2-140-350-3000
SERVICE KIT BOOSTER 140-350 – 4000 HR	BON2-140-350-4000
SERVICE KIT BOOSTER 140-350 – 6000 HR	BON2-140-350-6000

MAINTENANCE KITS - CNG



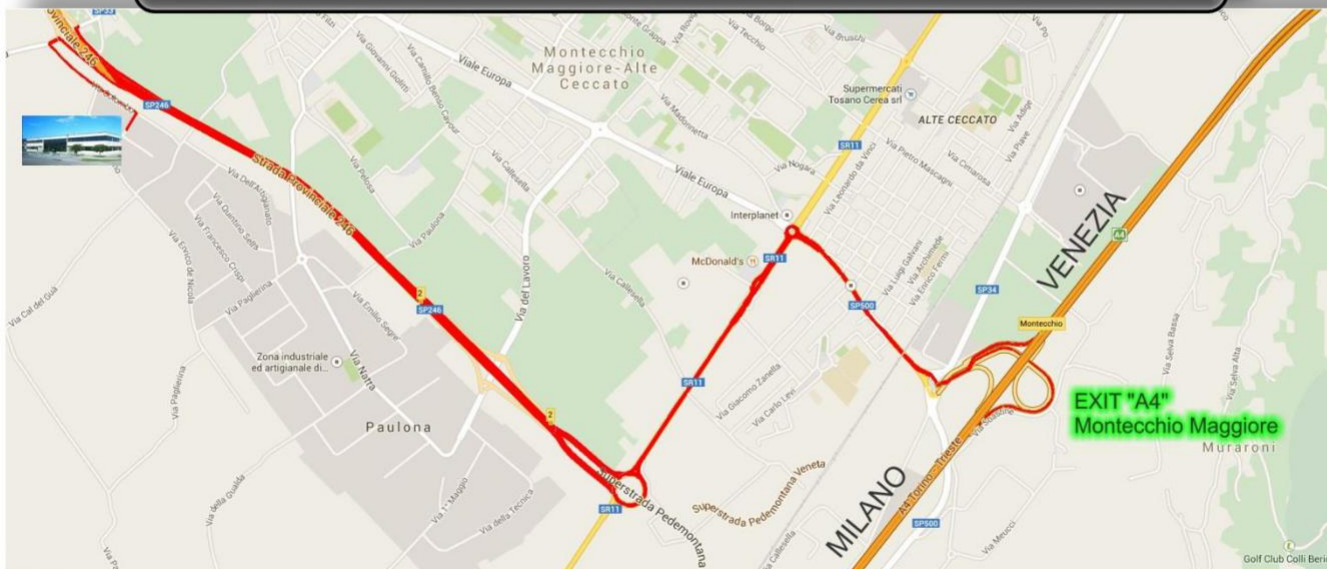
DESCRIPTION	CODE
SERVICE KIT CNG 1.0 – 1000 HR	CNG1-1000
SERVICE KIT CNG 1.0 – 3000 HR	CNG1-3000
SERVICE KIT CNG 2.8 – 2000 HR	CNG2-2000
SERVICE KIT CNG 2.8 – 4000 HR	CNG2-4000
SERVICE KIT CNG 3.8 – 2000 HR	CNG3-2000
SERVICE KIT CNG 3.8 – 4000 HR	CNG3-4000
SERVICE KIT CNG 5.0 – 2000 HR	CNG5-2000
SERVICE KIT CNG 5.0 – 4000 HR	CNG5-4000
SERVICE KIT CNG 7.5 – 2000 HR	CNG7-2000
SERVICE KIT CNG 7.5 – 4000 HR	CNG7-4000
SERVICE KIT CNG 10.0 – 2000 HR	CNG10-2000
SERVICE KIT CNG 10.0 – 4000 HR	CNG10-4000

LUBRICATING OIL LIST



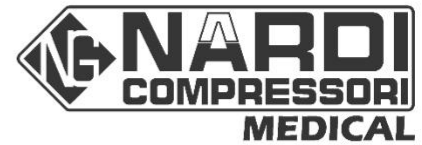
DESCRIPTION	TANK	CODE
SYNTHETIC OIL FOR BREATHING AIR HIGH PRESSURE COMPRESSORS	1 liter	OIL01-025-01
SYNTHETIC OIL FOR BREATHING AIR HIGH PRESSURE COMPRESSORS	5 liters	OIL01-025-05
MINERAL OIL FOR BREATHING AIR HIGH PRESSURE COMPRESSORS	1 liter	OIL01-010-01
MINERAL OIL FOR BREATHING AIR HIGH PRESSURE COMPRESSORS	5 liters	OIL01-010-05
SYNTHETIC OIL FOR HIGH PRESSURE INDUSTRIAL GAS	1 liter	OIL01-000-01
SYNTHETIC OIL FOR HIGH PRESSURE INDUSTRIAL GAS	5 liters	OIL01-000-05
MINERAL OIL FOR DIESEL AND GASOLINE ENGINES	1 liter	OIL15-000-01
MINERAL OIL FOR DIESEL AND GASOLINE ENGINES	5 liters	OIL15-000-05

Nardi Compressori ITALY



Connections

	Railway station VICENZA		15 Km
	Airport VERONA "Villafranca"	VRN	55 Km
	Airport VENICE "Marco Polo"	VCE	83 Km
	Airport MILAN "Orio al Serio"	BGY	150 Km
	Airport BOLOGNA "Marconi"	BLQ	170 Km
	Airport MILAN "Linate"	LIN	200 Km
	Airport MILAN "Malpensa"	MLX	230 Km



A complete line of oil free Low Pressure compressors with maximum working pressure of 10 Bar plus a new line of 30 Bar compressors. These compressors have different tank-capacity up to a maximum of 500lt. Power includes 1-phase and 3-phase AC electric motors, DC electric motors (battery) as well as gasoline engines.



High Pressure compressors up to 450 Bar for the filling of cylinders for breathing air, used often for scuba diving and by fire stations for fire and rescue operations as well as for military applications.



High Pressure compressors and Boosters up to 450 Bar. Technical gas compressors with high degree of purity for industrial use, the range is completed by the supply of High Pressure cylinders for storage in different capacities and configurations.



High Pressure compressors for refueling of natural gas vehicles. Compressors in this line have been designed for Industrial and domestic use, creating simple and economic small refueling stations for private utility using gas supplied by network lines.





Nardi Compressori Srl
Via Marco Polo, 2 36075
Montecchio Maggiore (VICENZA) ITALY
Tel. +39.0444.159111 - 497514 -694885
Fax. +39.0444.159122
Mail. info@nardicompressori.com



www.nardicompressori.com



www.facebook.com/nardicompressorisl/



nardi compressori



+79272772864